

# THE CREE HUNTER AND TRAPPER

THE OFFICIAL MAGAZINE OF THE CREE HUNTERS  
AND TRAPPERS INCOME SECURITY BOARD  
NUMBER 22 / JUNE 2017



Office de la sécurité du revenu  
des chasseurs et piégeurs criés

Cree Hunters and Trappers  
Income Security Board

ᑕᕐᑎᑦ ᑕᕐᑎᑦ ᑕᕐᑎᑦ





# ISP USEFUL AND MONTHLY PAYMENTS

**Beneficiaries of the Program can choose to receive their benefits in monthly payments, instead of quarterly cheques.**

## **What are monthly payments?**

**Monthly payments are ISP benefits you receive every month, instead of 4 times a year.**

### **HOW DOES IT WORK?**

FOUR TIMES A YEAR, BENEFICIARIES MUST MEET WITH THEIR LOCAL ADMINISTRATOR FOR AN INTERVIEW WHERE THEY PROVIDE INFORMATION ON THEIR TIME IN THE BUSH, THE TIME SPENT WORKED AND INCOME EARNED AND ANY OTHER INFORMATION CONCERNING THEIR FAMILY.

IF BENEFITS ARE PAYABLE, THE LOCAL ADMINISTRATOR WILL ISSUE THE ISP CHEQUE. THE DIFFERENCE IS, INSTEAD OF RECEIVING AN AMOUNT TO COVER SEVERAL MONTHS, THE PAYMENT WILL BE DIVIDED BY THE NUMBER OF MONTHS UNTIL THE NEXT INTERVIEW. AFTER THAT INTERVIEW, ON THE FIRST BUSINESS DAY OF THE FOLLOWING MONTH AND THE MONTHS AFTER, A MONTHLY AMOUNT OF ISP BENEFITS WILL BE DEPOSITED DIRECTLY INTO YOUR BANK ACCOUNT.

## HOW WILL I BE PAID?

When you meet your Local Administrator for your quarterly interview, you will receive a cheque. In the following months until your next interview, your monthly amount will be directly deposited into your bank account.

## HOW DO I REQUEST MONTHLY PAYMENTS?

Bring a written document with your banking information to your Local Administrator, who will fill out the corresponding form.

## WHEN CAN I START RECEIVING MONTHLY PAYMENTS?

Monthly payments can begin only with the first payment of the program-year, in September. You must request them at time of the July interview.



**DO I HAVE TO COME OUT OF THE BUSH EVERY MONTH TO RECEIVE MY MONTHLY PAYMENT?**

No, you only have to come out of the bush to meet with your Local Administrator for your quarterly interviews, at the same time as before in September, December, April and June. In between interviews, unless there is a **change** in your situation, your monthly payment will be deposited directly into your bank account.

**WHAT HAPPENS IF THERE IS A CHANGE IN MY FILE?**

There is a **change** in your file:

- You or your consort start to work or go on training
- You have not yet spent enough days in the bush
- There is a change in your family situation
- Etc.

If necessary, the Board could cancel one or more monthly payments – to prevent creating an overpayment that you would have to repay. The file will be revised and the amount of benefits will be adjusted in time for the next quarterly interview.

**WHEN ARE THE MONTHLY PAYMENTS DEPOSITED?**

Monthly payments are deposited the **first business day of each month.**

**MY CONSORT AND I HAVE SEPARATE PAYMENTS. WHAT HAPPENS FOR US?**

You must both agree on what type of payment you want. It is not possible to combine quarterly payments for one person and monthly payments for the other.

**RECORD OF MY DEPOSITS**  
YOUR LOCAL ADMINISTRATOR RECEIVES THE STUBS FOR YOUR MONTHLY DEPOSITS. YOU CAN REQUEST THEM AT YOUR FOLLOWING INTERVIEW.





# Northern Pike

ANIMAL PROFILE

**English Name:** Northern Pike  
**French Name:** Grand brochet  
**Scientific (Latin) Name:** *Esox lucius*  
**Cree Name:** Chinseo  
**Cree Syllabics:** ᑕᓂᓄᓐ

THE NORTHERN PIKE IS A FISH THAT IS OMNIPRESENT THROUGHOUT THE PROVINCE OF QUÉBEC, ALL THE WAY WEST INTO ALBERTA, BRITISH COLUMBIA, INTO THE NUNAVUT, NORTHWEST TERRITORIES, YUKON AND EVEN ALASKA. WORLDWIDE, THE PIKE HAS A CIRCUMPOLAR DISTRIBUTION.

They are common in Russia and in northern parts of Europe. It truly is a northern fish. In the United States, pike only occur in the northernmost states bordering Canada. The pike is easy to recognize. Although there are several species of pike throughout North America, there is only one species in Eeyou Istchee. The northern pike is easily recognizable by its long body, its absence of a mid-body dorsal fin that is instead replaced by a dorsal fin just ahead of the tail. The overall coloration usually varies from brownish to green with characteristic beige/white spots on the sides.

“...any pike over 20 pounds is considered a big fish! In Europe, big pike get even bigger and there are rumors of fish approaching 100 pounds.”

The head is long and pointy and the mouth is covered in very sharp teeth. Pike can grow very big and it is not uncommon in Eeyou Istchee to find fish exceeding 20 pounds (10 kg). The average pike may measure less than one meter (36 inches) in length but really big fish will exceed 45 inches (1.5 meters). The largest fish ever captured on rod and reel in North America weighed 46 pounds and measured 52 inches. It is likely that fish bigger than that have been captured in nets in Eeyou Istchee. But for sure, any pike over 20 pounds is considered a big fish! In Europe, big pike get even bigger and there are rumors of fish approaching 100 pounds.



Northern pike is a predatory fish that captures prey by ambush. Most pike will wait near cover, at the base of rapids, near big rocks, anywhere prey species may occur. Pike will consume a wide variety of prey including walleye, cisco, white fish, suckers, smaller pike and occasionally, ducks, squirrels or muskrats.

Northern pike are easy to catch and that is good news for anglers of Eeyou Istchee. If they are in the lake, you will catch them, but beware big pike will test your gear and their teeth will break any fishing line that is not in top condition. So, if you boat by a weed bed and you happen to see what looks like a log just slightly below the surface, grab your fishing rod and cast a lure right in front and hang on! Their combativeness will always surprise you!



# NEWS & REPORTS

## FUR DAY ON THE HILL

On October 29, 2016, the Fur Institute of Canada organized a celebration of fur at the Parliament in Ottawa. During that day, appropriately called “Fur Day on the Hill”, people from all parts of the fur industry attended meetings in Ottawa with members of parliament to highlight the importance of the fur industry to the various sectors. Present at this meeting were Serge Larivière, Director General of the Cree Hunters and Trappers Income Security Board, as well as Alan House, treasurer of the Cree Trappers Association. People from all across Canada came to this meeting to ensure that the members of parliament never forget the importance of the fur industry in Canada.



## DECEMBER STAFF MEETING

On December 14 and 15, 2016, Local administrators and all staff of the Cree Hunters and Trappers Income Security Board met in Québec City for their annual meeting dedicated to updates on the Program and training. The staff of the Board only gets to meet twice a year, so this meeting is always a fun time!

## PESCOF TRAINING

In January of 2017, the Cree Trappers Association organized a training session for new Cree Instructors for two courses related to firearms safety and introduction to hunting with firearms.



The two master instructors for this course were Martin Savard from the Fédération québécoise des chasseurs et pêcheurs (Québec Hunters and Anglers Federation) and Serge Larivière. Right after their training, the new students had a chance to teach two simultaneous classes in Waskaganish. In total, 16 new Cree Instructors were certified! Following the training of Cree instructors, courses were set up in every Cree community so the new Cree instructors have a chance to test their teaching skills right away!

## QUEBEC TRAPPERS CONVENTION

The annual convention of the trappers was held this year in Lévis, on the south shore of Québec City. As always, people from all over the province gather to talk trapping, share trapping methods and ideas, learn about new skinning and fur handling techniques as well as examine what new trapping supplies are available.



This year, there was also a fashion show that highlighted the creation of young fur designers. Always a great event to attend and next year is also scheduled to be held in Lévis during the same time of year.



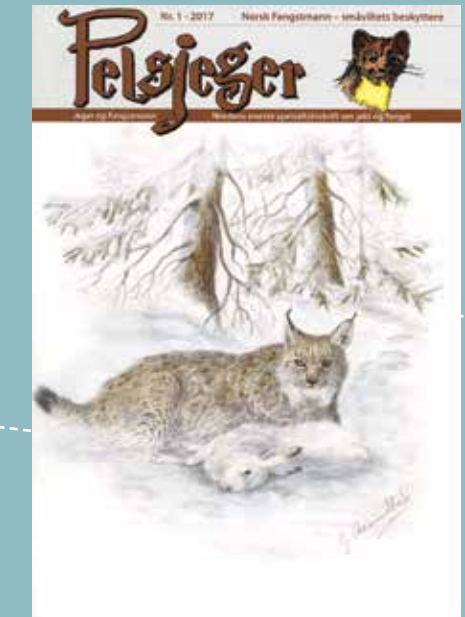
## SEMAINE VERTE

On March 4, 2017, the nature television series “La Semaine Verte” aired a special program on the history of trapping and the challenges of the fur trade. Serge Larivière, Director General of the Cree Hunters and Trappers Income Security Board, participated in the program and explained some of the challenges native and non-native trappers face. Watch it, you are likely to see people you know including Charlie Bosum from Oujé-Bougoumou and George Shecapio from Mistissini!



## THE CREE HUNTER AND TRAPPER IN NORWAY

Some pictures of the Cree Hunter and Trapper Magazine were recently reprinted in a Norwegian trapper magazine called “PELSJEGGER”, which means “Trapper” or “Fur hunter”.



## MEETING OF INTEREST NATIONAL AND INTERNATIONAL

JUNE  
16 to 17  
2017

- Annual Meeting of the Fur Institute of Canada
- Le Westin Montreal, Old Montreal, Québec
- [fur.ca/annual-general-meetings](http://fur.ca/annual-general-meetings) ☎ 613-231-7099

JULY  
27 to 29  
2017

- 58th Annual NTA Convention
- Winnebago County Fairgrounds, Pocatonia, Illinois
- [www.nationaltrappers.com](http://www.nationaltrappers.com)



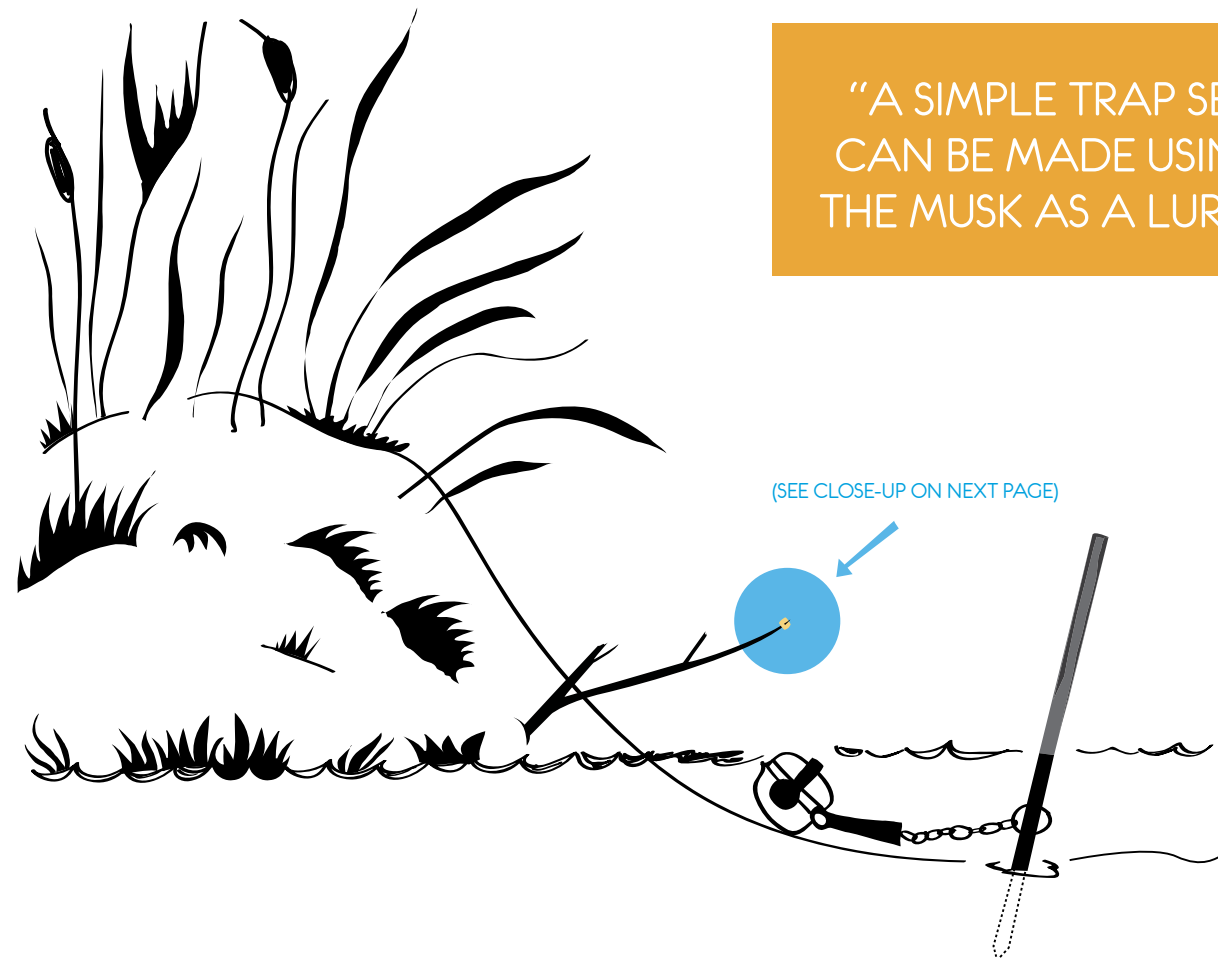


# Make that set!

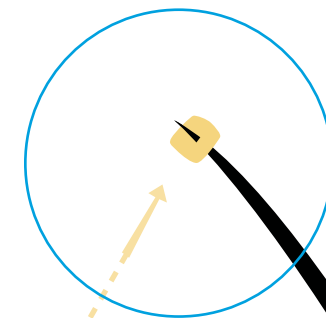
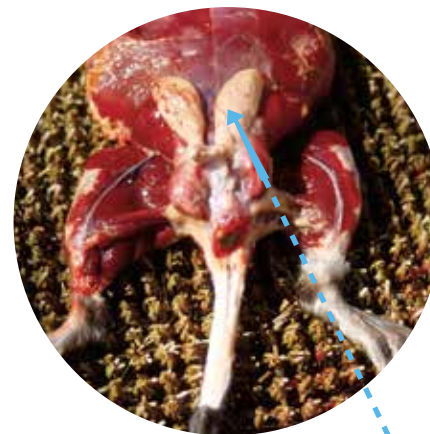
## MUSK SET FOR MUSKRATS

BY SERGE LARIVIÈRE

IN THE SPRING, MALE MUSKRATS DEVELOP VERY LARGE MUSK GLANDS BECAUSE THEY USE THESE MUSK GLANDS TO MARK THEIR TERRITORIES.



“A SIMPLE TRAP SET CAN BE MADE USING THE MUSK AS A LURE...”



Hunters who have harvested muskrats in the spring know very well the sweet but powerful smell of muskrat musk. The smell is very pleasant to the human nose and is an extremely powerful attractant for other muskrats. A simple trap set can be made using the musk as a lure by simple cutting up a muskrat gland into small squares, the size of a small pea and putting a small piece of muskrat gland on a stick that we poke in the bank so it hangs just above our trap.

By placing the trap just underwater near the shoreline, and poking the stick in the banks so it hangs over the trap 5 or 6 inches, any investigating muskrat will come to the shore to check out the scent of what they believe is an intruder on their territory. In doing so, they will walk over your trap and get caught!

As with any trap set, the trap should be tied securely to prevent muskrats from escaping and to provide a humane death. Tie the trap using a long piece of wire so the trapped muskrat can reach the deep water. Musk sets are especially useful when a trapper wants to catch a muskrat and has no bait available.

If you shoot a muskrat in the spring, make sure to save the glands, you can dry them on a piece of newspaper or hang them on a stick in the camp and cut them up when you need them for trapping other muskrats. The best scent for muskrats is the natural scent of their own musk glands. Once again, a very simple trap set for muskrats that is highly effective and can be made almost anywhere muskrats live. A bonus to trapping muskrats in the spring is that any glands you do not use for trapping muskrats make a very attractive scent for other animals that you may wish to trap, such as lynx, mink or marten. Every predator likes the smell of muskrats!

“MUSK SETS ARE ESPECIALLY USEFUL WHEN A TRAPPER WANTS TO CATCH A MUSKRAT AND HAS NO BAIT AVAILABLE.”







# ISP USEFUL

## WHAT IS THE RETRO CHEQUE?


**The Retro Cheque is the final payment you receive once the program-year has ended. It is issued in September.**

### HOW IS IT CALCULATED?

Once you have provided all information about your harvesting activities and income received during the year, the final amount of benefits you are entitled to for the year is calculated.

#### What is included in the Retro Cheque?

- Days spent over the estimated number of days
- Far Harvesting Allowance
- Sick Days
- Maternity Days
- Other adjustments due to changes in your family situation

 **DID YOU REACH THE NUMBER OF DAYS YOU ESTIMATED?**

**Yes - You may receive a Retro cheque with a small payment as benefits will be calculated with the new indexed amounts.**

 **DID YOU SPEND MORE DAYS THAN YOUR GOAL?**

**Yes - You may receive a Retro Cheque. All the days you spent higher than your goal will be paid with the Retro Cheque.**

 **DID YOU SPEND FEWER DAYS THAN YOUR GOAL?**

**Yes - You probably won't receive a retro cheque and may have an overpayment you will have to repay to the Board (that will be automatically deducted from your benefits the following year).**



# EXAMPLE OF A RETRO CALCULATION

And the answer to the following questions:

- Does a bigger retro cheque mean more benefits?
- Why do some beneficiaries get a bigger retro cheque than others?
- They spent less days in the bush than me but received a bigger retro cheque. Why?
- Can I get a bigger retro cheque?

The total amount of benefits payable are calculated at the start of the year and are divided into **4 equal payments** issued over the following 12 months.

Beneficiaries receive their 4 quarterly payments and may receive a **Retro Cheque** to compensate for the days they spent over their starting number.

\*Preliminary Daily Allowance for 2015-2016  
 \*\* Final Daily Allowance for 2015-2016

## EXAMPLE 1

Trapper who plans to spend **150 days** in the Bush:  
 Amount for the year\*: \$9,850

FINAL: **150 days**  
 Final amount for the year\*\*: \$9,908

SEPTEMBER	DECEMBER	APRIL	JULY
\$2,462,50	\$2,462,50	\$2,462,50	\$2,462,50

RETRO CHEQUE  
 \$58

## EXAMPLE 2

Trapper who plans to spend **150 days** in the Bush, **BUT** starts at 120:  
 Amount for the year\*: \$7,880

FINAL: **150 days**  
 Final amount for the year\*\*: \$9,908

SEPTEMBER	DECEMBER	APRIL	JULY
\$1,970	\$1,970	\$1,970	\$1,970

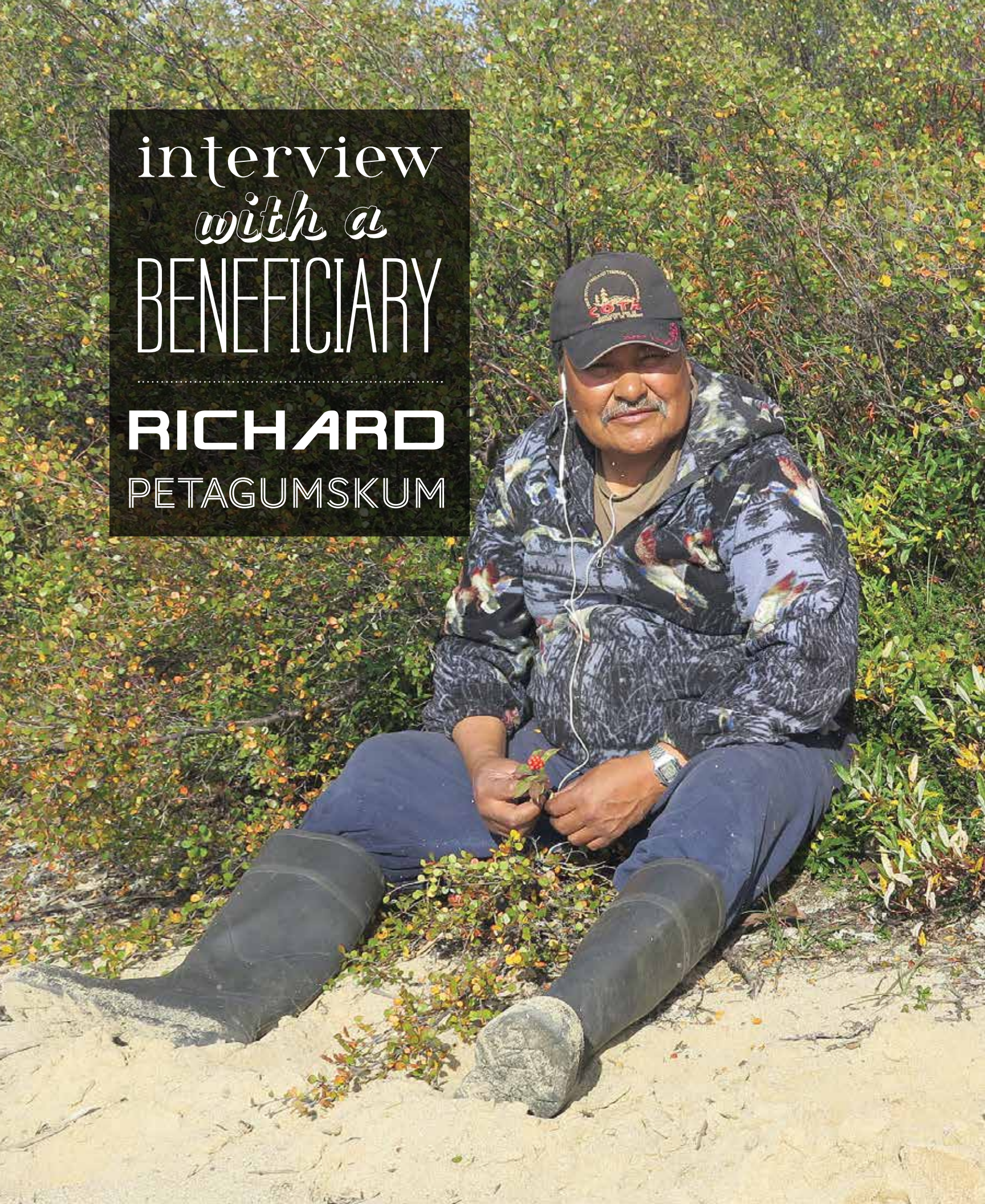
RETRO CHEQUE  
 \$2,028

### MY FILE IS CLOSED. WHY DID I RECEIVE A RETRO CHEQUE?

WHEN YOUR FILE IS CLOSED, ANY PAYMENT THAT IS DUE IS ISSUED AT THE FOLLOWING QUARTERLY PAYMENT. UNLESS YOU HAVE AN OVERPAYMENT IN THE FILE, YOU ARE ENTITLED TO A RETRO CHEQUE WHICH CORRESPONDS TO THE INDEXATION OF ISP BENEFITS.



interview  
with a  
BENEFICIARY  
RICHARD  
PETAGUMSKUM



DURING THE AUTUMN OF 2016, DIRECTOR-GENERAL, SERGE LARIVIÈRE WAS ABLE TO SPEND SOME TIME IN THE BUSH WITH BENEFICIARY RICHARD PETAGUMSKUM FROM WHAPMAGOOSTUI.

**SL** Mr. Petagumskum, thank you for agreeing to share your life story with the readers of *The Cree Hunter and Trapper*. To start, can you tell me your full name, where and when you were born?

**RP** My name is Richard Petagumskum, I was born on April 18, 1963 in the bush 172 miles East of Whapmagoostui on my parent's trapline. My father is Joseph Petagumskum and my mother is Jane Sandy, a Naskapi from Schefferville.

**SL** You lived in the bush for how long?

**RP** I lived on that trapline until I was 13 years old. When I turned 5, I would attend school on and off and whenever I was not in school, I would be in the bush with my parents.

**SL** Do you remember what your first gun was?

**RP** Yes, my first gun was a 22 single-shot.

**SL** What was your first kill?

**RP** My first kill was a ptarmigan.

**SL** Did you ever kill big game animals with the 22?

**RP** Lots, especially caribou with the 22. Now, we have moose starting to show up around Whapmagoostui, but I have never killed a moose with my 22.

**SL** How did you access your trapline?

**RP** We would go first by boat, but later on, we went by plane. Today we can access this trapline either by plane or we go by skidoo during winter.

**SL** When did you marry?

**RP** I married Evelyn Fireman, daughter of William Fireman and Mina Washpepabano in 1985. Both of us were 22 years old at the time. Together we have had 4 boys and I also have one stepdaughter, Evelyn's daughter. We now have 16 grandchildren and one great-grandchild.

**SL** Have you ever worked full time?

**RP** I never had a full time job but had lots of contracts for skidoo trails and things like that. Now I hunt full time, that is what I do.

**SL** What is your favorite bush food?

**RP** My favorite bush food is probably ptarmigan but I also love dry fish.

**SL** What about your favorite time of year?

**RP** My favorite time of year is definitely spring time, for goose break!

**SL** Do you recall times when food was really scarce?

**RP** In January of 1968, food was really scarce, I was told that my mother had to eat dried fish eggs so she could breast-feed her children. My father used to say that there were times, before that, of even greater food scarcity, times when people would even die of starvation. At that time, every animal you caught was eaten.



**SL** Can you give me some examples?

**RP** People often ate marten, otter, white owls, mink and of course all the more common food animals, such as beaver porcupine, bear etc. The only animals that people rarely ate were fox, wolf and skunk.

**SL** Living in Whapmagoostui, did you ever see or harvest animals that are not common in the Cree territory but that often occur in the Inuit territory?

**RP** I started going north in 1979, going much further than Eeyou Istchee, way into the land of the Inuit.



**RP** During my travels, I saw some animals that are unusual for Cree people. For example, I once saw a walrus out at sea. I have seen muskox, polar bears, killer whales and belugas on several occasions.

**SL** Did you harvest any of those animals?

**RP** Yes, in my life I have killed two beluga whales, two muskox and two polar bears, as well as several seals.

**SL** You harvested muskox, is the meat good?

**RP** Yes, the meat is very rich and even better than caribou. It is a lot richer and more tender.

**SL** Where do you find muskox on the Cree territory?

**RP** I still see muskox when I travel, but usually close to the coast, never deep in the interior.

**SL** Do you like seal meat?

**RP** Yes, I like seal meat. I have eaten a lot of arctic char and I believe this is, by far the best fish to eat in the North. My Inuit friends, they eat whale and polar bears, but I have never tried either of those.

**SL** Did you ever harvest a wolverine?

**RP** No, I have never seen a wolverine, never seen tracks, and never harvested one.

**SL** Did you ever have any close calls where you got scared or were in a dangerous situation?

**RP** I never got scared because I'm used to it. I have flipped a canoe in a lake once in the fall. Many times, I face very big waves out in the bay. I had to sleep in the bush several times because of broken skidoos, so I would just dig a trench in the snow and sleep in the snow, next to my broken machine, until I could fix it.

**SL** Did you ever fall through the ice?

**RP** Yes, I think I went through the ice 3 times with my skidoo. One time, I was 10 miles from camp, I had no snowshoes, the snow was 2 feet deep and after going through the ice, I pulled myself out and I had to walk into camp. Needless to say, I got to camp very late that night. I was really cold!

**SL** Did you ever find a bear den in winter?

**RP** Yes, I have killed probably 12 bears during winter as I pulled them out of their dens!

**SL** How do you find a bear den in winter?

**RP** You have to know your trapline. You watch for signs as you travel. Often, near bear dens, the trees will be scratched, there will be signs of bears climbing nearby and you will see the terrain that makes you think there could be a bear den. Then you look, and you may see the opening.

**SL** How do you get the bear to come out of the den?

**RP** You dig the snow out of the entrance and you look. If you see it, you can shoot it, if not you talk to it and wait for it to come out to look at you so you can shoot it.

“DURING MY TRAVELS, I SAW SOME ANIMALS THAT ARE UNUSUAL FOR CREE PEOPLE.”



**SL** You said you have 4 boys, do they also hunt?

**RP** Yes, all our 4 boys live in Whapmagoostui and hunt.

**SL** Mr. Petagumskum, you are known for knowing the north very well and being at ease in the barrens, even north of the Cree territory, why is that?

**RP** I started going north many years ago and love the barren lands. I am really comfortable there, I know the land very well, and I know the animals and where to find them. I have many Inuit friends and I speak a little Inuktituk. I like to spend time with the Inuit, they often come to visit us at our camp, and we share food and stories. I also hunt for them when they ask me. Sometimes they call and ask me to harvest some animals for them, for their traditional meals, animals such as polar bears or beluga whales. I like to help them, the Inuit are my friends!

**SL** Thank you Mr. Petagumskum for sharing your stories with us, I'm sure the readers of The Cree Hunter and Trapper will appreciate your stories. Very interesting! Thank you again. •





# Inscriptions For ISP

*New deadline!*

To be enrolled for 2017-2018

**Right now** ▶▶▶ \* Meet with your Local Administrator

**Before June 2017** ▶▶▶ \* Make sure your name appears on the Local Committee List

**Your application must be received before June 2017 AND you must provide:**

- \* **Cree Beneficiary number**  
*All members of the family*
- \* **Birth Certificate**  
*All members of the family*
- \* **Social Insurance card**  
*Adults of the family*
- \* **Calendar of days spent in the bush from July 2016 to June 2017**
- \* **All documents confirming income received from work or different programs**  
*Employment Insurance, Social Aid / Band Welfare, etc.  
For the adults of the family*
- \* **Information on your harvesting activities and equipment**

**JULY AND AUGUST 2017** ▶ \* **REVISION OF ALL FILES AND REQUESTS BY THE HEAD OFFICE**

**SEPTEMBER 2017** ▶ \* **FIRST PAYMENT OF THE 2017-2018 PROGRAM-YEAR**

# The Fishing Chronicle

## FLY FISHING

**FLY FISHING MAY NOT BE A TRADITIONAL CREE WAY OF HARVESTING FISH FROM THE WATERS OF EYYOU ISTCHEE, BUT THERE ARE TIMES AND PLACES WHERE FLIES, AS A FISHING LURE, CAN OUTPERFORM OTHER LURES.**



A wide variety of flies are available on the market. Hunters will find that from time to time certain colors or designs may work better than others. Dedicated fly fishermen use special rods, reels and lines and "whip" the line over waters where fish may be hiding. Although fly fishing is not recognized as a rapid way to catch a lot of fish, it is good fun and it's not a bad idea to keep a couple flies in your tackle box for times where nothing else seems to work.

SHOULD YOU WISH TO LEARN ABOUT FLY FISHING, AND WHAT FLIES WORK BEST UP NORTH, THE BIG STREAMERS (LEFT IN PICTURE) ARE GREAT FOR PIKE WHEREAS THE SMALLER FLIES (RIGHT IN PICTURE) ARE BETTER FOR SMALLER FISH SUCH AS SPECKLED TROUT. FLY FISHING IS ALMOST ALWAYS A SURFACE AFFAIR SO SELDOM DO YOU GET TO CATCH WALLEYE OR LAKE TROUT WHILE FLY FISHING. IF THAT IS A CHALLENGE YOU WISH TO PURSUE, YOU CAN ALWAYS TIE A FLY ON A REGULAR LINE IN FRONT OF A SINKER AND TROLL OVER PROMISING AREAS.

FLY FISHING IS POPULAR THROUGHOUT NORTH AMERICA BECAUSE OF THE ACTION IT PROCURES. FOR THE CREES OF EYYOU ISTCHEE, IT IS JUST ONE MORE WAY TO CATCH FISH!



# GLOBAL WARNING



BY MAXIME LAVOIE, PH.D.  
WILDLIFE BIOLOGY

LAST FALL, A FRIEND INVITED ME TO HIS SHACK. IT WAS QUITE FAR FROM WHERE I LIVED AND WHEN WE ARRIVED LATE NIGHT AFTER A LONG DRIVE, WE WERE EXHAUSTED. SINCE IT WAS CHILLY, WE DECIDED TO BUILD A LARGE FIRE AND LOADED ITS WOOD STOVE AT FULL CAPACITY. AT FIRST, IT SEEMED A GREAT IDEA. THE SHACK WARMED UP SLOWLY AND SOON WAS PRETTY COMFY. BEFORE LONG, HOWEVER, IT BECAME UNCOMFORTABLE AND WE WISHED WE HAD STOP FEEDING THE FIRE SOONER. INDEED, THE FIRE WAS BURNING SO HOT THERE WAS NO WAY TO STOP IT AND THE SHACK GOT HOTTER AND HOTTER. WE COULDN'T GET TO BED THAT NIGHT. NEVERTHELESS, WE DECIDED TO GO FISHING AT DAWN BUT END UP TAKING A NAP INSTEAD ... IN THE BOAT...

Global warming works about the same. Indeed, the Earth has been warming up slowly since 1900 because of an increase of greenhouse gasses (the logs in the example above). These gasses are produced by a diversity of man activities like burning of petrol (cars, planes, snowmobiles...), agriculture and deforestation. They trap the heat created by the Sun, increasing Earth temperature. If global warming continues as predicted, by the end of 2100, the Earth would have warm in a century as much as since we came out of the Ice Age, 5000 years ago! Once the planet starts to warm up, it is difficult to slow it down and nearly impossible to stop.

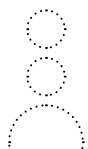
Changes in climate across the whole world have recently been observed due to global warming. Climate is defined by the average weather (rain, wind, temperature...) over a long period of time for a particular region. For example, the climate in Eastmain is sub-arctic and is characterised by long and very cold winters. However, on January 28th 2006, the weather in Eastmain was sunny with a temperature of 2°C. Global warming does not necessarily means every places are slowly getting hotter. Indeed, some places became hotter, while others colder; some dryer, while others wetter.

However, one common trend is that the north will warm faster and unpredictable extreme weather events will become more frequent. This increase in extreme events could mean "big trouble". One can think of the catastrophic devastation of the 1998 North American ice storm, 2004 Japan tsunami, 2010 Haiti earthquake, 2010 Russian heat wave, or 2016 Fort McMurray wildfire. These events seem pretty far away from us but it is just a matter of time before we get hit by one.



Climate changes have been negative for many wildlife populations, like caribou or arctic foxes, which have steadily been declining in many areas. Indeed, some animal species, like moose or wild turkeys, have benefited from these changes and, each year, they are expanding their territories toward the north. Consequently, if global warming continues at this rate, wildlife, as well as many human populations, will either have to adapt or move on. As climate change will continue to affect future generations, it is important to increase our understanding, diffuse our knowledge and do the best we can to help mitigate their potential effects.

In the next magazines, this changing climate chronicle will examine the impacts of climate change on wildlife roaming the Eeyou Istchee territory and their habitats. It will cover a wide range of species from ungulates such as caribou and moose, to furbearers like arctic fox and fisher, fishes like pike and trout, as well as birds such as turkey vulture. Finally, it will also focus on the variability in the length of the ice season and changes in vegetation.





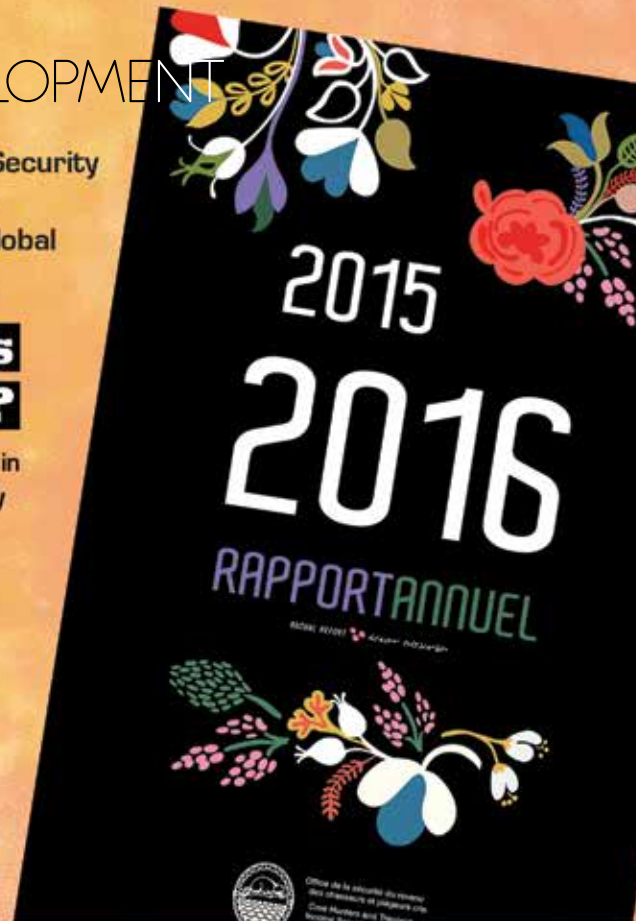
# ISP

## & SUSTAINABLE DEVELOPMENT

The Cree Hunters and Trappers Income Security Board is happy to announce the following measures it has taken to engage in the global effort towards sustainable development.

### What is the Board doing?

The Board makes conscious and efficient choices in regards to the purchase of office supplies used by the Head Office and the local offices.



### Actions taken by the Board

- Annual Reports and magazines printed on 100% recycled paper
- Annual Reports – Number of printed copies reduced :
  - Available for consultation and download on the web site
  - Possible to order a printed version by contacting the Head Office
- Business relations with suppliers who take into account the principles of sustainable
- Purchase of 100% recycled paper
- Recycling of all paper used at the Head Office

**The Board is dedicated in pursuing its effort towards a sustainable development.**

This magazine is now printed on 100% recycled paper!

# STAY ACTIVE EVERY DAY

You can do many physical activities as an individual, as a family, and as a community.  
Canoeing and paddling trips are a great way to make fond memories together.  
Active parents will have active children!



## TIPS FOR BOATING SAFETY

**Learn to swim. Eliminate your fear of water.**

**Wear a life jacket (PFD). Make it a good habit.**

**Avoid alcohol. Boating and alcohol is a bad mix.**

**Take a Boating Safety Course.**

**Check the weather forecasts.**

**Tell someone where you are going and what time you expect to be back.**

**Do a safety check on your boat and outboard motor.**

**Take extra gasoline.**

**Take extra clothes and a warm jacket.**

**Make a safety kit for your trip and yourself.**



Conseil Cri de la santé et des services sociaux de la Baie James  
σDd7<sup>a</sup> b7 ΔPΔ ·ΔΔ<sup>a</sup> <aa b7C6σD<sup>4</sup>  
Cree Board of Health and Social Services of James Bay



For more information:  
contact the Cree Health Board  
Public Health Department: 418-923-3355  
or visit [creehealth.org](http://creehealth.org)





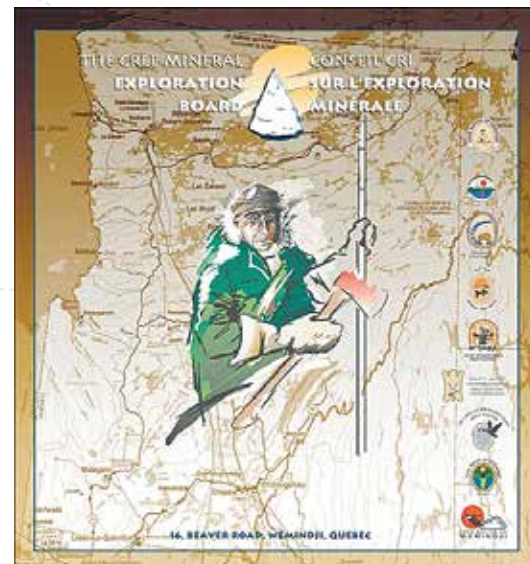
The Cree Mineral Exploration Board (CMEB) is a non-profit Cree organization that was created in March 2002 under the Peace of the Braves agreement. "We encourage Cree members to prospect and explore for minerals while hunt and trap throughout Eeyou Istchee," says President, Mr. Reggie Mark.

## The Cree Mineral Exploration Board: Servicing the Cree and Mineral Exploration Community

The CMEB was implemented to increase Cree participation in the field of mineral exploration, by providing a point of entry and basic training, giving more opportunities to Cree stakeholders,

supporting activities developed by Cree enterprises, and by making financing and other forms of support more accessible. The CMEB also invites more Cree members to undertake successful and ongoing

mineral exploration activities in their territory, thus contributing to sustainable development.



- ◀ A PICTURE OF REGGIE MARK
- ◀ THE CMEB LOGO WITH PROSPECTOR AND EQUIPMENT
- ▶ A PROSPECTOR IN THE FIELD

### CMEB Objectives

- Invite more Cree members to undertake mineral exploration and promote the mineral potential of Eeyou Istchee.
- Develop reliable Cree expertise in mineral exploration by promoting, providing, and supporting training and job assistance.
- Providing financial support to Cree prospectors.
- Finance, facilitate, and contribute to development projects; implement Cree mineral exploration enterprises.
- Provide technical expertise and support to the Grand Council, communities, individuals, enterprises, MENR and other stakeholders who are considering mineral exploration or environmental assessment activities.
- Along with Cree and non-Cree organizations, actively contribute to sustainable practices and development, and manage natural resources within the territory.

### Five Programs for the Cree Community

The CMEB oversees five programs that are aligned with the Cree culture.

- Awareness and Promotion:** reaching out to as many people as possible and to the mineral exploration community.
- Training and Job Assistance:** providing a skilled workforce and facilitating communication between Cree employers and workers. We train young Cree prospectors and members of the

Cree Trappers Association. We also provide business and financial training related to the mineral industry for Cree leaders and officials, and we have so far trained over 300 people, some of whom work for the mining industry, while others have become contractors.

**Prospector Assistance:** encouraging prospectors to undertake local mineral exploration activities and thus contribute to the growth of our local economy.

**Project Development and Entrepreneur's Assistance:** this program is essential for the mining sector in Eeyou Istchee. The CMEB supports Cree exploration projects financially and provides assistance to local stakeholders. The following Cree companies benefit from the program: Nimsken Corporation, Wemindji Exploration, J.A. Macleod Exploration, Native Exploration and EnviroCree.

**Geoscience Expertise and Technical Assistance:** the CMEB regularly produces geological and mineral data for Cree representatives in Quebec. It offers information and assistance to other organizations involved in management and development activities throughout the territory.

### Hunter, Trapper and EXPLORER!

The CMEB provides prospecting and mineral exploration expertise to Cree members (see picture on next page) for the local development of natural resources.

Our goal is to become the most accessible partner for Cree organizations and the most productive in terms of information, advice and guidance on Cree mineral resources. We also invite more Cree members to explore for minerals while they hunt and trap throughout the territory; there are many more unexplored opportunities right under the feet of Cree hunters and trappers!





## MINERAL DEVELOPMENT STAGES



WATCH THE VIDEO ABOUT WINTER HARVESTING IN THE CREE COMMUNITY OF MISTISSINI, WITH DAVID MIANSCUM. ON OUR WEB SITE

[www.chtisb.ca/media-gallery/](http://www.chtisb.ca/media-gallery/)

Please contact our team if you are ready to take action and want to increase your mineral exploration activities:



◀ **Youcef Larbi, PhD. Geo.**  
Chief Geologist and Chief Executive  
819 978-0264 #327

Cree Mineral Exploration Board  
21 Hilltop, P.O. 150, Wemindji J0M 1L0

Tel. 819 978-0264 #321, 252  
Fax. 819 978-0258  
Cel. 514 792-7444

[www.cmeb.org](http://www.cmeb.org)  
<https://www.facebook.com/CreeMineralsExplore/>





# STAFF PROFILE

THE CREE HUNTERS AND TRAPPERS INCOME SECURITY PROGRAM HAS BEEN SUCCESSFUL FOR 40 YEARS BECAUSE OF THE DEDICATION OF ITS STAFF. THIS COLUMN "STAFF PROFILE" PRESENTS A SHORT BIOGRAPHY OF THE PEOPLE THAT WORK TO ENSURE THE SUCCESS OF THE PROGRAM. IN THIS ISSUE, WE ARE PROUD TO PROFILE MS. ANGELINE MCLEOD OUR LOCAL ADMINISTRATOR, IN WASKAGANISH.

My name is Angeline McLeod. I am from Waskaganish QC and was born in Val-d'Or QC, to Yvon and Rita McLeod, 2nd child of 3. I have 2 amazing children Breton and Brooke. Growing up, many times I would stay in the bush with my late grandparents Angus and Mina Hester and also with my parents. I enjoyed learning the traditional way of life.

I graduated high school in 2001 at Ecole Winnibekuu School. I continued my education and attended Canadore College and obtained a General arts and Science certificate. In 2011, I attended Algonquin college and completed my program in Office Administration. Once I completed my studies I came back to my community. I was hired as a receptionist/Secretary for the Cree Trappers Association. I really enjoyed working with our local hunters and trappers. They have so much wisdom to share. Every interview is a learning experience for me, I enjoy working for the Cree Hunter and Trappers Income Security Board. ●

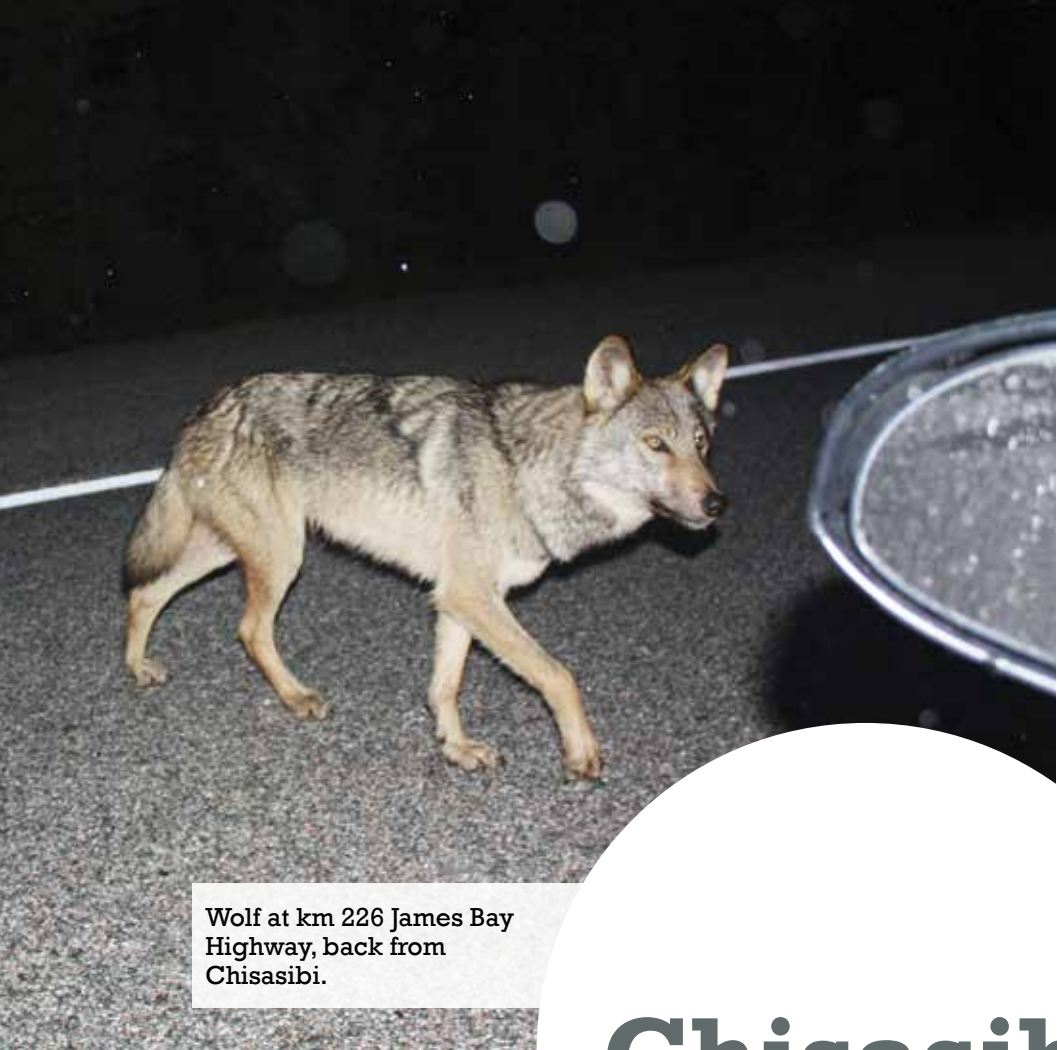
## Angeline McLeod

**EMPLOYED BY THE BOARD SINCE: NOVEMBER 17, 2014**  
**CURRENT POSITION: LOCAL ADMINISTRATOR**  
**WORK LOCATION: WASKAGANISH**

"I REALLY ENJOYED WORKING WITH OUR LOCAL HUNTERS AND TRAPPERS. THEY HAVE SO MUCH WISDOM TO SHARE."







Wolf at km 226 James Bay Highway, back from Chisasibi.

# THE TRAVELING DIRECTOR

HERE ARE SOME PHOTOS TAKEN BY THE DIRECTOR GENERAL DURING HIS RECENT TRIPS TO CREE COMMUNITIES.

## Chisasibi

September 2016



George Head along with beneficiaries Rene Louttit and Micheal Louttit.



## Whapmagoostui

September 2016



Noah Sheshamush (left) discusses with John Shem (right) at the Whapmagoostui airport.





Bertie Kawapit, our local administrator in Whapmagoostui.



Northern store in construction. Coming soon: Tim Hortons and KFC!



Sandy Petagumskum is always in a good mood!







A big crowd gathers at the Wildberry festival.



Four wheelers are the way of transportation in Whapmagoostui.







Robbie George (left) and Jonas Sheshamush (right) in Whapmagoostui.



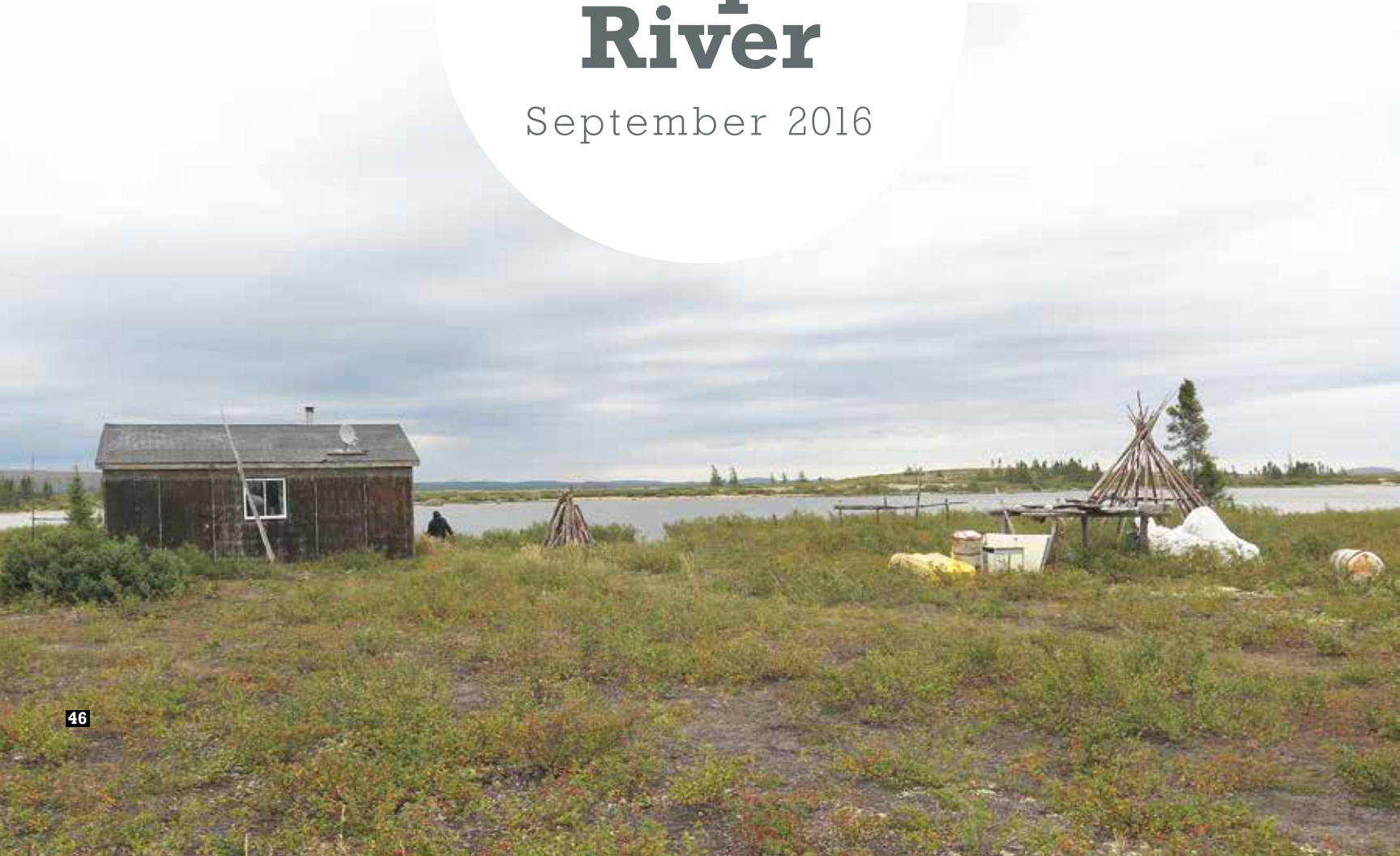




The adventure begins!

# Nastapoka River

September 2016







Richard Petagumskum walks back to the boat with a porcupine.



Evelyn Fireman gets a duck ready for cooking.



Singeing porcupine quills.





Preparing a cooking stick.



Bannock and tea anyone?







View from the camp from a nearby hilltop.



Lots of fish in the net for Richard Petagumskum!



Evelyn Fireman enjoys a shore lunch.





Richard Petagumskum admires the beautiful scenery.



Heading back to camp.





Traveling up North requires some good mechanic skills.



There is more than one way to cook a fish!







Cheyak!



George M. Shecapio helps clean bear intestines.





George Shecapio (left), Richard Petagumskum (middle) and Evelyn Fireman (right) working on the bear intestines.



Bear fat on a drying rack.



Bear intestines have been cleaned.



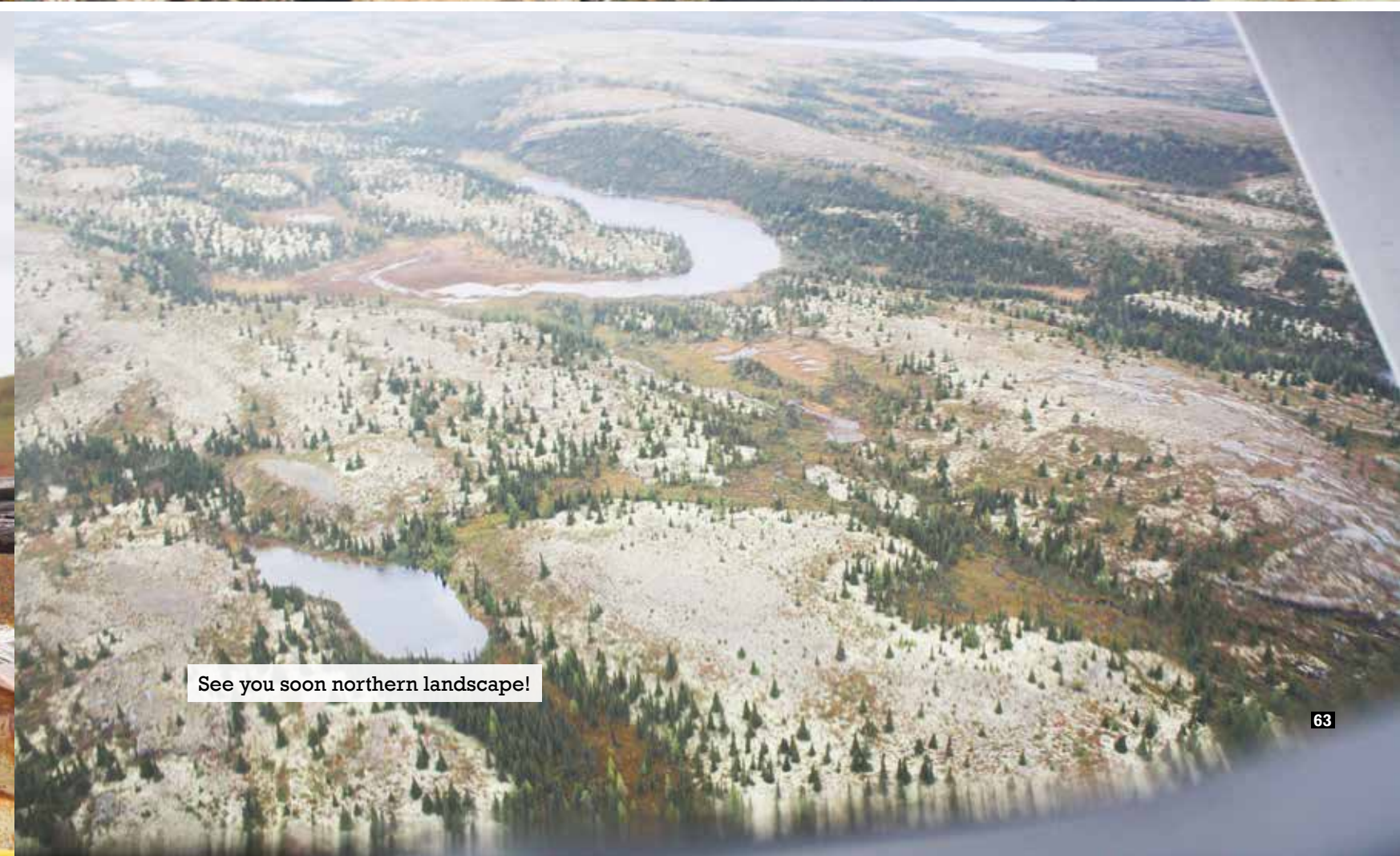




Look at the camera George!



The journey has come to an end.



See you soon northern landscape!





A traditional dance as part of the Christmas celebration in Mississauga.

Santa is being generous.

# Mississauga

December 2016



Happy girls!

This Santa looks extremely familiar.





# Washaw Sibi

January 2017

A surprise visit in Washaw Sibi. From left to right: Martin Savard (Sécurité Nature), Maurice Kistabish (Cree Trappers Association), Billy Katapatuk Sr., Annie Mapachee-Salt and Serge Larivière.



The group of newly certified cree instructors for the Canadian firearms safety course during the Waskaganish training in January. From left to right: Back row (standing): Frankie Dick, David Ratt, George Natawapineskum, Jimmy Fireman, Sam Cox, Thomas Stevens, Sanford Shecapio, Clark Shecapio, Varley Shecapio-Blacksmith, Ron Zachary, James Wapachee, Brandon Moses, Betty Tomatuk. Front row (kneeling): David Shem, Bill Blackned, George Shecapio, Paul Shecapio and Martin Savard.



# Waskaganish Firearms training

January 2017



Martin Sarvard from Sécurité Nature training the new instructors.





A new group of students in Waskaganish taking the exam.



Hugo Hester (left), Thomas Stevens (center) and Jimmy Trapper (right) from Waskaganish!



George Shecapio (left), Martin Savard (center) and Ron Zachary (right).



Danny Kitchen has a good laugh!



Ron Zachary to grades some fur at the Waskaganish Office.





George Shecapio gives a firearms training course in Mistissini.

# Mistissini Firearms training February 2017



Lots of white birds on the Route du Nord.

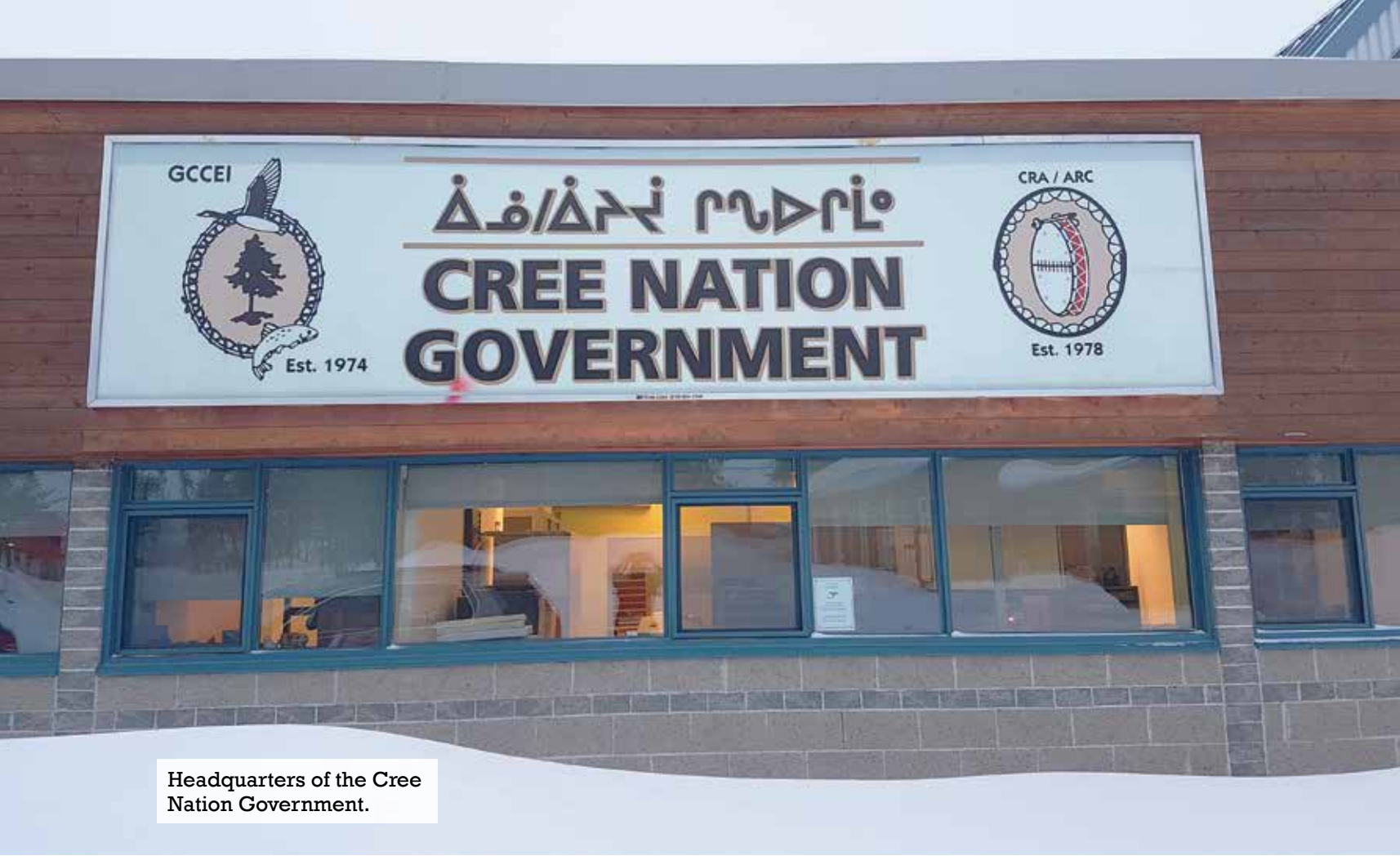
# Nemaska Firearms training March 2017











Headquarters of the Cree Nation Government.



Bill Blackned discusses with student Brenda Wapachee.



Steven Neeposh gives a firearms course in Nemaska.



Bill Blackned explains firearm safety mechanism.





